

**COMPONENTI IN GHISA  
ELEMENTS IN CAST IRON**



Ferro fuso / Cast steel  
H.65 x L.40 mm

Art. CS.13.142 □ 12,5



Ferro fuso / Cast steel  
H.67 x L.45 mm

Art. CS.13.151 □ 12,5

Art. CS.13.152 □ 14,5

Art. CS.13.153 □ 16,5



Ferro fuso / Cast steel  
H.38 x L.40 mm

Art. CS.13.900 □ 14,5

Art. CS.13.900.01 □ 16,5

Art. CS.13.900.02 □ 12,5



Ferro fuso / Cast steel  
H.65 x L.40 mm

Art. CS.13.901 □ 14,5

Art. CS.13.901.01 □ 16,5

Art. CS.13.901.02 □ 12,5

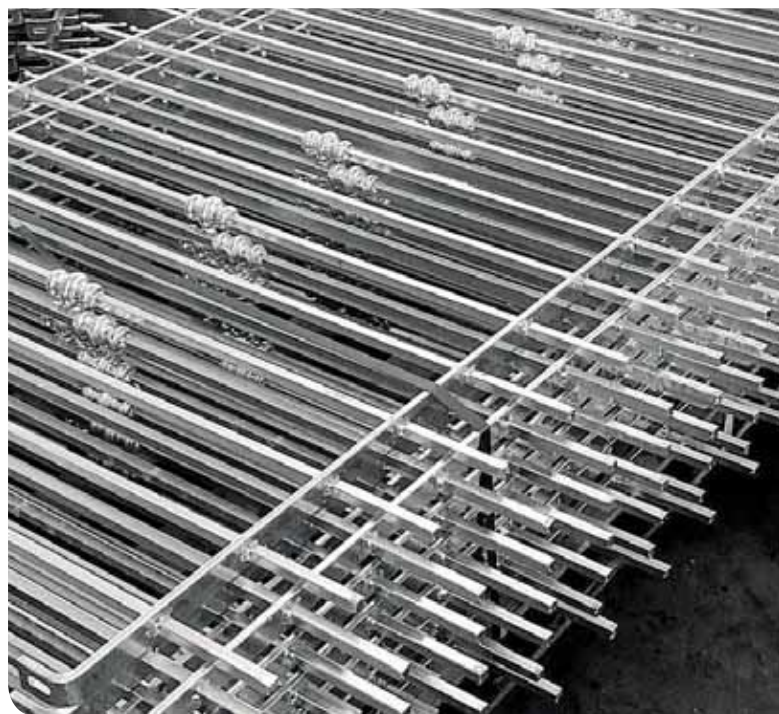
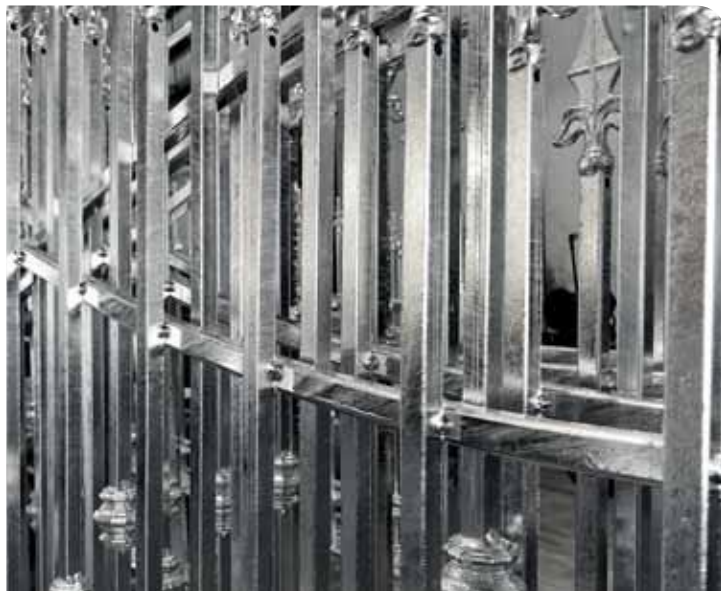


Ghisa / Cast iron  
H.45 x L.40 mm

Art. CI.13.902 □ 12,5

Art. CI.13.903 □ 14,5

**ARTICOLI ZINCATI A FREDDO  
COLD GALVANIZED ARTICLES**



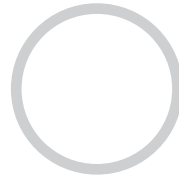
Tutte le parti di questo catalogo - foto comprese - sono di proprietà Euro-Fer. La riproduzione, anche parziale, è vietata in ogni forma e con ogni mezzo. / Every part of this catalogue - photos included - is Euro-Fer's property. All forms of copying are strictly prohibited.



Liscio / Smooth  
H.115 X L.75 mm  
Art. 01.094.01.ZF ≠ 14 x 6 mm



Tondo / Round  
H.350 X L.150 mm.  
Art. 01.369.ZF Ø 14  
Art. 01.370.ZF Ø 16



Liscio / Smooth  
H.100 mm  
Art. 02.031.ZF ≠ 12 x 6 mm



Liscio / Smooth  
H.1500 mm  
Art. 04.106.15.ZF Ø 14 mm  
H.1500 mm  
Art. 04.106.19.ZF Ø 16 mm



FORO QUADRO  
SQUARE HOLE



FORO TONDO  
ROUND HOLE



FORO QUADRO  
SQUARE HOLE

H.2000 mm.  
Art. 08.001.ZF fori / hole □ 14 INT.140 mm - n°14 fori / holes  
Art. 08.002.ZF fori / hole □ 16 INT.150 mm - n°13 fori / holes  
Art. 08.006.01.ZF fori / hole □ 12 INT.120 mm - n°16 fori / holes

H.2000 mm.  
Art. 08.023.ZF fori / hole Ø 14 INT.140 mm - n°14 fori / holes  
Art. 08.024.ZF fori / hole Ø 16 INT.150 mm - n°13 fori / holes  
Art. 08.025.ZF fori / hole Ø 18 INT.160 mm - n°12 fori / holes  
Art. 08.029.01.ZF fori / hole Ø 12 INT.120 mm - n°16 fori / holes  
Art. 08.115.ZF fori / hole Ø 14 INT.125 mm - n°15 fori / holes  
Art. 08.116.ZF fori / hole Ø 16 INT.125 mm - n°15 fori / holes

INT.125  
15 Fori per barra  
15 Holes for bar  
H.2000 mm. Foro □ 12  
Art. 08.059.ZF ≠ 30 x 8  
Art. 08.063.ZF ≠ 40 x 8



Piatto Mezzo Tondo /  
Half-Round Flat  
H.6000 mm.

Art. 12.059.01.ZF ≠ 30x8  
Art. 12.063.01.ZF ≠ 40x8  
Art. 12.064.01.ZF ≠ 40x10  
Art. 12.066.01.ZF ≠ 50x10



Sagomato / Contoured  
H.6000 mm.

Art. 12.085.ZF ≠ 50 x 14  
Art. 12.085.01.ZF ≠ 40 x 12  
Art. 12.085.02.ZF ≠ 45 x 12  
Art. 12.085.03.ZF ≠ 60 x 12 **NEW**



Barra per Fascette / Collar Bars  
H.4000 mm.

Art. 12.118.ZF ≠ 14x4



H.6000 mm.

Art. 12.158.ZF □ 12x12 mm.  
Art. 12.159.ZF □ 14x14 mm.



Quadro Martellato /  
Hammered Square  
H.6000 mm.

Art. 12.182.ZF □ 12x12 mm.  
Art. 12.183.ZF □ 14x14 mm.



Tubo Martellato /  
Tube Hammered  
H.6000 mm.

Art. 12.238.ZF □ 40x40 x 2.5 mm.  
Art. 12.240.ZF □ 30x30 x 2.5 mm.



H.125 X L.60 mm.  
Art. 13.077.ZF Ø 32 mm



H.155 X L.65 mm.  
Art. 13.080.ZF Ø 16 mm

## Nuove Borchie in Tubo / New Studs in Tube



H.39 x L.49 mm.

Art. 13.135.ZF Ø 12,5 mm  
Art. 13.136.ZF Ø 14,5 mm  
Art. 13.137.ZF Ø 16,5 mm



H.67 x L.40 mm.

Art. 13.138.ZF Ø 12,5 mm  
Art. 13.139.ZF Ø 14,5 mm  
Art. 13.140.ZF Ø 16,5 mm



Borchie Svasate /  
Countersunk Ironstud  
H.39 X L.40 mm.

Art. 13.137.B.ZF Ø 16,5 mm



H.67 x L. 40 mm

Art. TB.13.139.ZF Ø 14,5  
Art. TB.13.140.ZF Ø 16,5



H.67 x L.40 mm.

Art. 13.142.ZF □ 12,5 mm

H.36 x L.37 mm.

Art. 13.135.E.ZF Ø 12,5 mm  
Art. 13.136.E.ZF Ø 14,5 mm  
Art. 13.137.E.ZF Ø 16,5 mm

H.63 x L.37 mm.

Art. 13.138.E.ZF Ø 12,5 mm  
Art. 13.139.E.ZF Ø 14,5 mm  
Art. 13.140.E.ZF Ø 16,5 mm



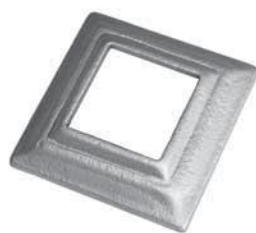
H.67 X L.45 mm.

Art. 13.148.ZF Ø 16,5 mm



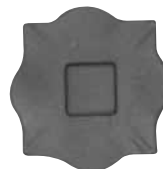
H.25 x L.35 mm.

Art. 13.167.ZF Ø 12,5 mm  
Art. 13.167.02.ZF Ø 16,5 mm



H.80 x 80 H. 20 mm.

Art. 13.319.ZF foro □ 30,5 mm  
Art. 13.320.ZF foro □ 35,5 mm  
Art. 13.321.ZF foro □ 40,5 mm



□ 100x100 mm

Art. 13.311.ZF  
sede/seat □ 30x30 mm



□ 100x100 mm

Art. 13.313.ZF  
foro/hole □ 30x30 mm

H.60 x 60 H. 20 mm.

Art. 13.322.ZF foro □ 25,5 mm  
Art. 13.323.ZF foro □ 30,5 mm



Ferro fuso / Cast steel  
H.38 x L.40 mm

Art. CS.13.900.ZF □ 14,5



Ferro fuso / Cast steel  
H.65 x L.40 mm

Art. CS.13.901.ZF □ 14,5  
Art. CS.13.901.01.ZF □ 16,5

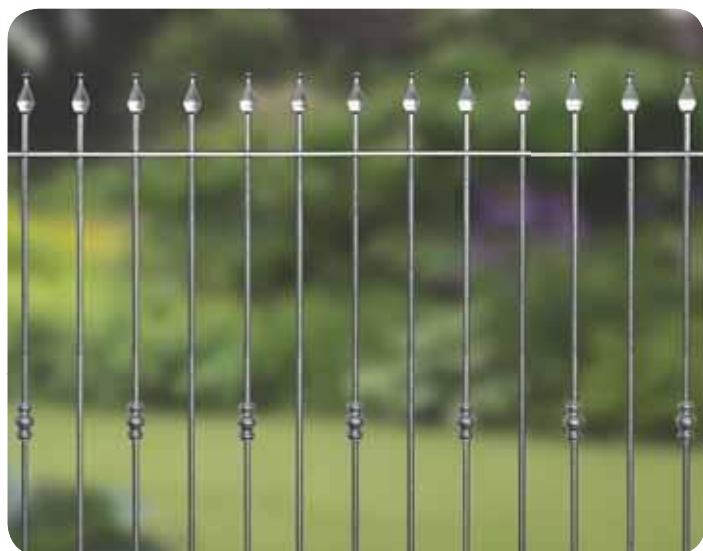


### Copricolonna / Post Caps

Art. 15.052.ZF □ 30x30 mm  
Art. 15.053.ZF □ 40x40 mm  
Art. 15.054.ZF □ 50x50 mm  
Art. 15.055.ZF □ 60x60 mm

### Copricolonna / Post Caps

Art. 15.056.ZF □ 80x80 mm  
Art. 15.057.ZF □ 100x100 mm  
Art. 15.058.ZF □ 120x120 mm  
Art. 15.059.ZF □ 150x150 mm



### Sfera vuota / Hollow sphere

Art. 15.059.05.ZF □ 30x30 Ø 40 mm  
Art. 15.059.06.ZF □ 40x40 Ø 40 mm  
Art. 15.059.07.ZF □ 50x50 Ø 50 mm

### Sfera vuota / Hollow sphere

Art. 15.059.08.ZF □ 60x60 Ø 60 mm  
Art. 15.059.09.ZF □ 80x80 Ø 80 mm  
Art. 15.059.10.ZF □ 100x100 Ø 100 mm